

SHERWOOD FOREST IN AND ADJOINING GREENVILLE S. C.

SCALE OF FEET
0 100 200 300 400 500 600

AUGUST 1951

DALTON & NEVES

McALISTER

J. R. HORNE

J. R. HORNE

S. S. HIE

LEGRAND

FRIARTUCK ROAD

SCARLETT STREET

PARKINS MILL ROAD

SHARON DRIVE

BOULEVARD

DON

DRIVE

ROBIN HOOD

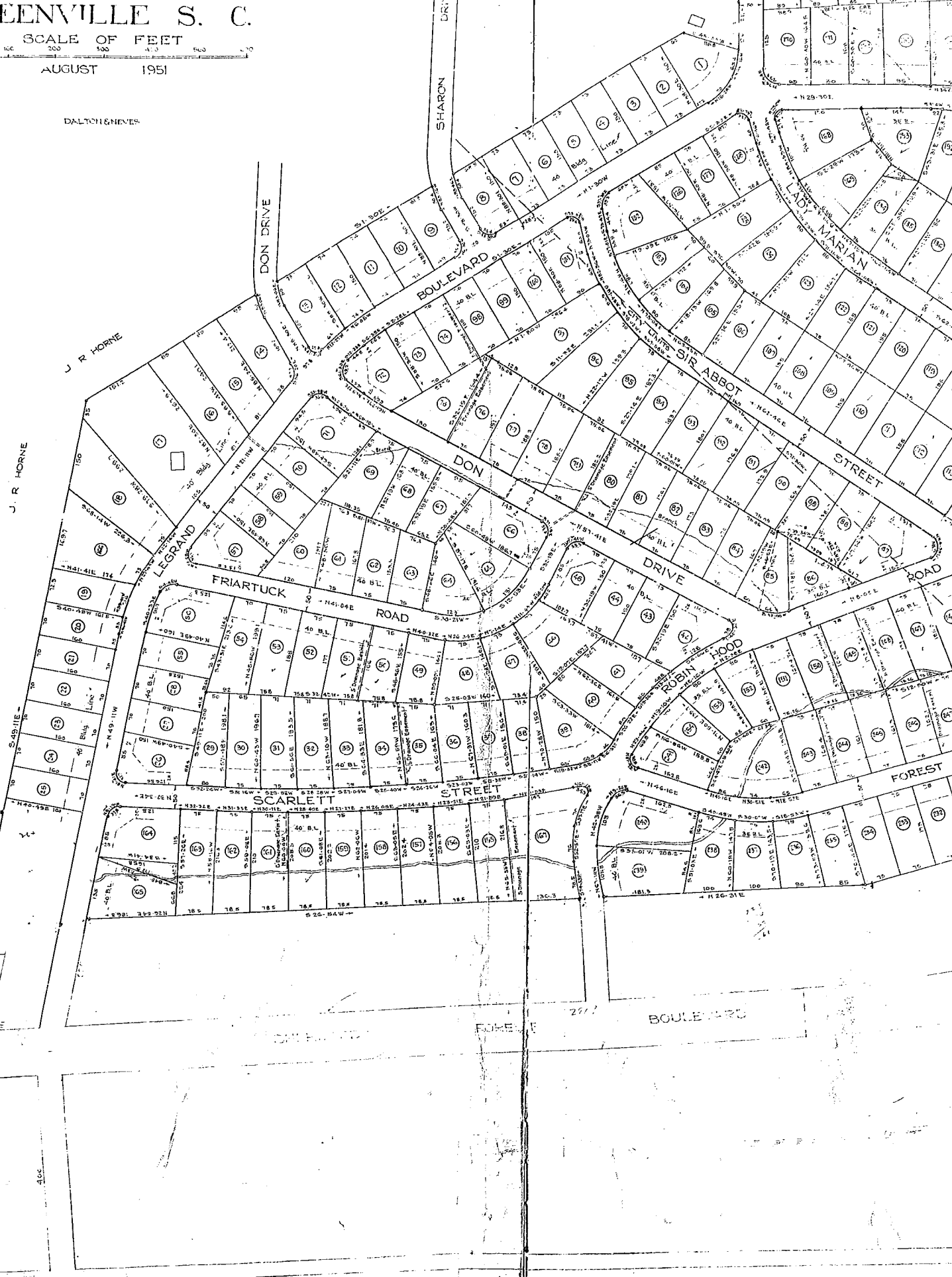
FOREST

BOULEVARD

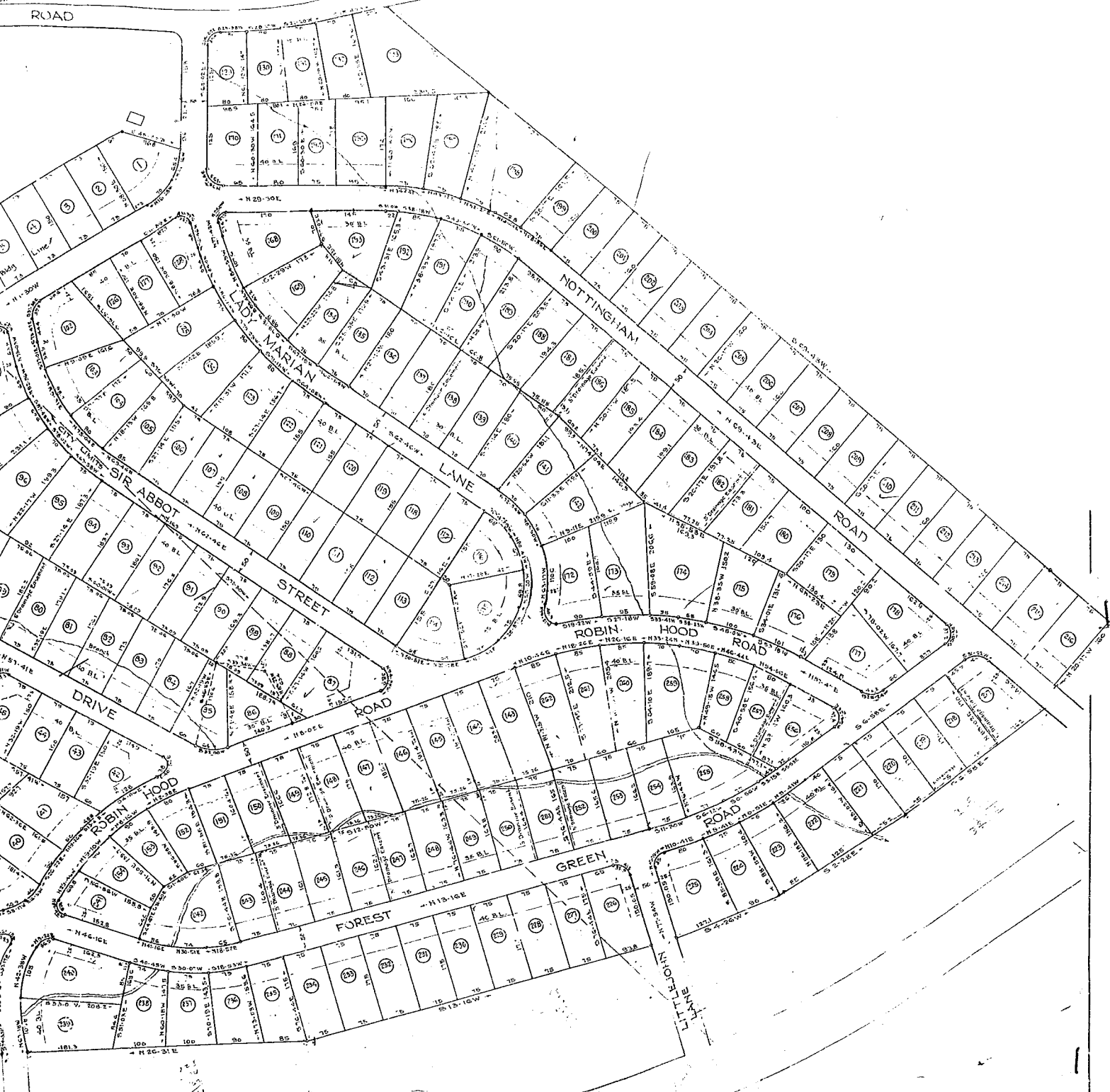
LADY MARIAN

SIR ABBOT

STREET



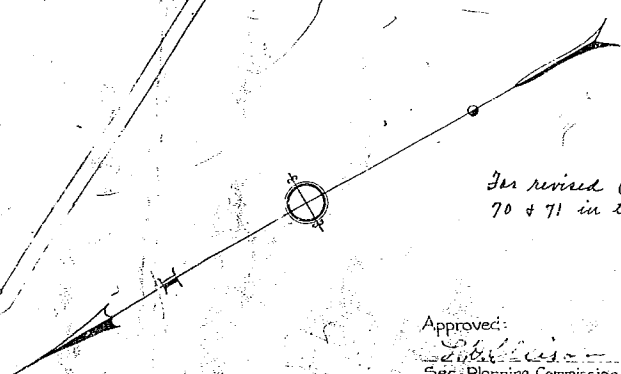
Iron Pins at all Corners



NOTES:
 Addition to Map made July & August (Lots 107-108-109-110-111)
 Revision of Lots 85-86-87-88-89 made Nov. 1952
 Addition to Map made Nov 1952 (Lots 172-262 Inc.)

BOULEVARD

Iron Pins at all Corners



*In revised Plot see pages
 70 & 71 in this Book.*

26786
 DEC 4 1952

Approved:
[Signature]
 Sec. Planning Commission